



OMNIEYE SECURITY

Powered by Spark

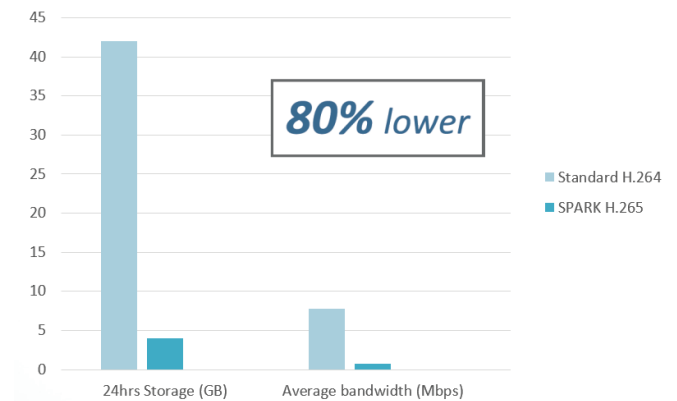


Advanced Series Network Cameras

Advanced Series Features

H.265 Smart Codec

Reduce bandwidth and storage requirements without sacrificing image quality.



Video Analytics

Omnieye Advanced series motorized cameras delivers intelligent video analytics functions, allowing quick and accurate response to events in specific areas.

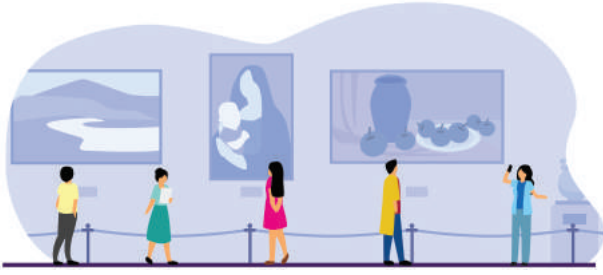


Efficient monitoring of keyzones with analytics feature such as intrusion, line crossing and loitering, which automatically prompts an alarms when an intruder is detected.

Safety in public places can be achieved with abandoned object feature, designed for preventing terror-like events in a pre-cautious manner.



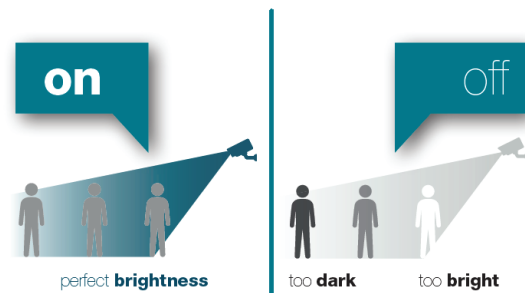
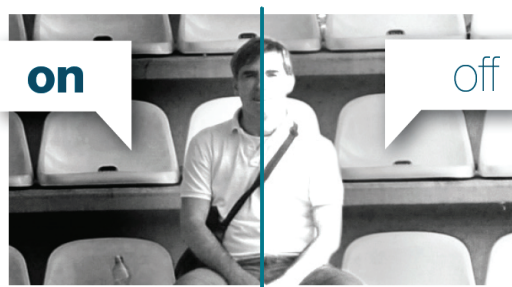
Compile statistics with area counting and line counting for a better understanding of your store's traffic flow.



Secure precious items by using object removed feature, which activates an alarm when the object of interest is removed from its original location.

Adaptive IR

The camera's IR LED dynamically changes the output in accordance to the scene changes, guaranteeing correct lighting of the monitored area.



Outdoor Ready

Certified with ingress protection and impact protection tests.

IP67 / IK10



UL Certified

Providing you with the ultimate safety standard.

ONVIF Profile S, T, G, Q Conformant

Built on an open platform for easy integration with 3rd party devices.



Advanced Series: Motorized Lens


SR-C-A2-BM1-V13-IR
SR-C-A5-BM2-V13-IR
SR-C-A2-DM1-V13-IR
SR-C-A5-DM2-V13-IR

Product name	BM1	BM2	DM1	DM2
Resolution	2MP (1920x1080)	5MP (2592x1944)	2MP (1920x1080)	5MP (2592x1944)
Image Sensor	Sony Starvis CMOS Progressive Scan 1/2.8"			
Lens	Motorized 2.7–13.5mm, F1.4–2.8			
FOV	32° ~ 100°	35° ~ 104°	34° ~ 110°	33° ~ 102°
Min. Illumination	0.00688Lux (Color) 0.00185Lux (B/W)	0.0257Lux (Color) 0.0117Lux (B/W)	0.00688Lux (Color) 0.00185Lux (B/W)	0.0257Lux (Color) 0.0117Lux (B/W)
IR Illuminators	Adaptive IR up to 40m effective range			
PTZ	Optical zoom 3x			
Video Compression	H.265, H.264, MJPEG			
Frame Rate	Up to 30fps			
WDR	120dB			
Image Settings	3DNR, brightness, contrast, sharpness, saturation, hue, gain control, WB, BLC, HLC, defog, privacy mask, OSD, corridor mode, rotation: mirror, flip, mirror flip			
Analytics	Intrusion, line crossing, area counting, line counting, departure, wrong direction, loitering, abandoned object, object removed			
Audio Support	Two-way audio, line input and line output			
Alarm I/O	1/1			
Event Triggers	Schedule, network loss detection, tamper, lost focus, motion detection, audio detection, alarm in, SD status			
Event Actions	E-mail notification, OSD indication, snapshot to SD card, snapshot to FTP, SD card recording, HTTP generic event			
Edge Storage	MicroSDHC/SDXC card slot			
Dimensions	Ø89x261mm		Ø135x125mm	
Weight	2kg		1.2kg	
Housing	Aluminum			
Outdoor ready	IP67 / IK10			
Certifications	UL 62368, CE, FCC			
ONVIF	Profile S, T, G, Q			
Operating Temp.	–40°C ~ 60°C			

Advanced Series: Fixed Lens


SR-C-A2-BF1-F3-IR
SR-C-A5-BF2-F3-IR
SR-C-A2-DF1-F3-IR
SR-C-A5-DF2-F3-IR

Product name	BF1	BF2	DF1	DF2
Resolution	2MP (1920x1080)	5MP (2592x1944)	2MP (1920x1080)	5MP (2592x1944)
Image Sensor	Sony Starvis CMOS Progressive Scan 1/2.8"			
Lens	Fixed 2.8mm, F1.8	Fixed 2.8mm, F1.6	Fixed 2.8mm, F1.8	Fixed 2.8mm, F2.0
FOV	110°	97°	110°	98.1°
Min. Illumination	0.0866Lux (Color) 0.077Lux (B/W)	0.00667Lux (Color) 0.00568Lux (B/W)	0.06Lux (Color) 0Lux (B/W)	0.03Lux (Color) 0.02Lux (B/W)
IR Illuminators	Adaptive IR up to 30m effective range		Adaptive IR up to 25m effective range	
PTZ	-			
Video Compression	H.265, H.264, MJPEG			
Frame Rate	Up to 30fps			
WDR	100dB			
Image Settings	3DNR, brightness, contrast, sharpness, saturation, hue, gain control, WB, BLC, HLC, defog, privacy mask, OSD, corridor mode, rotation: mirror, flip, mirror flip			
Analytics	-			
Audio Support	-			
Alarm I/O	-			
Event Triggers	Schedule, network loss detection, tamper, motion detection, SD status			
Event Actions	E-mail notification, OSD indication, snapshot to SD card, snapshot to FTP, SD card recording, HTTP generic event			
Edge Storage	MicroSDHC/SDXC card slot			
Dimensions	83.55x78.6x146.6mm		Ø110x82mm	
Weight	0.49kg		0.53kg	
Housing	Aluminum			
Outdoor ready	IP67 / IK08		IP67 / IK10	
Certifications	UL 62368, CE, FCC			
ONVIF	Profile S, T, G, Q			
Operating Temp.	-30°C ~ 60°C		-30°C ~ 55°C	


Advanced Series: PTZ




SR-C-A2-PM1-V129-IR

Product name	PM1
Resolution	2MP (1920x1080)
Image Sensor	Sony Starvis CMOS Progressive Scan 1/2.8"
Lens	Motorized 4.3-129mm, F1.6-4.7
FOV	2.11° ~ 58.9°
Min. Illumination	0.0257Lux (Color) 0.0117Lux (B/W)
IR Illuminators	Adaptive IR up to 180m effective range
PTZ	360° continuous pan / -15° ~ 90° tilt / 30x optical zoom
Video Compression	H.265, H.264, MJPEG
Frame Rate	Up to 60fps
WDR	120dB
Image Settings	3DNR, brightness, contrast, sharpness, saturation, hue, gain control, WB, BLC, HLC, defog, privacy mask, OSD, corridor mode, rotation: mirror, flip, mirror flip
Analytics	-
Audio Support	Two-way audio, terminal block 1 input / 1 output
Alarm I/O	2/2
Event Triggers	Schedule, network loss detection
Event Actions	E-mail notification, Schedule recording, OSD indication, FTP recording, SD card recording
Edge Storage	MicroSDHC/SDXC card slot
Dimensions	Ø190x336mm
Weight	5.2kg
Housing	Aluminum
Outdoor ready	IP66 / IK10
Certifications	UL 62368, CE, FCC
ONVIF	Profile S, T, G, Q
Operating Temp.	-40°C ~ 60°C

Advanced Series: Accessories

PM1 PTZ Pendant Mount Bracket		
	Product Code	SR-O-PM101
	Casing Material	Aluminum
	Dimensions	219x330x125mm
	Weight	1.9kg

PM1 PTZ Wall Mount Bracket		
	Product Code	SR-O-PM102
	Casing Material	Aluminum
	Dimensions	246x140x223mm
	Weight	1.4kg



spark
Italian inSight

Spark Headquarters

Via Antonio Gramsci, 86/A
42124 Reggio Emilia, Italy
+39 0522 929850
info@spark-security.com

Spark Asia office

6F, N. 93, Shuiyuan Street, East Dist.,
300042 Hsinchu City, Taiwan (R.O.C)
+886 3 575 2786
info.asia@spark-security.com

Visit our website www.spark-security.com